



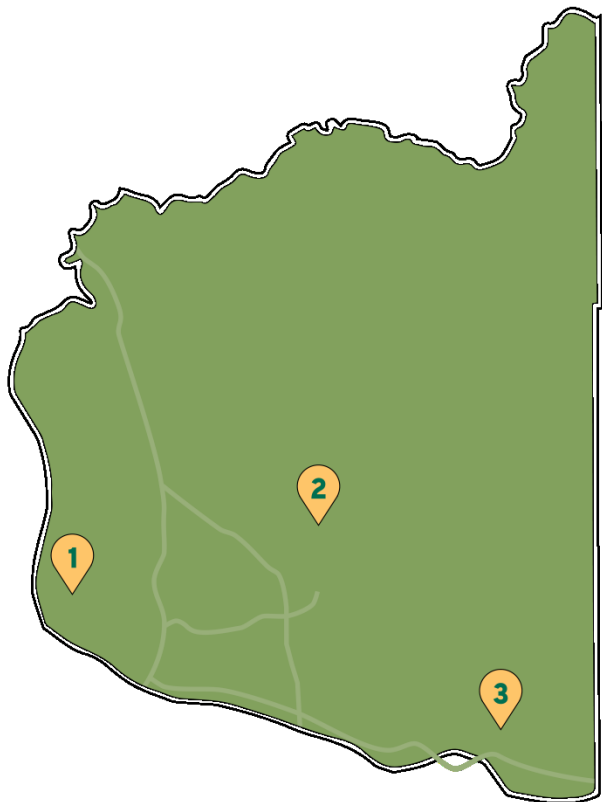
# Recycling 201

Beyond the Curb

# Learning Objectives

1. List items that can be taken to the transfer stations for recycling
2. Identify materials that need to go to Household Hazardous Waste at the transfer station
3. Explain how to prepare (potentially) hazardous materials for transport
4. Apply learnings to your life: What is one thing you might do differently or share with someone else

# Transfer Stations



1

## **West Vancouver Materials Recovery Center**

6601 NW Old Lower River Rd 360-737-1727

Mon – Fri 6 AM to 6 PM Sat 8 AM to 4 PM

HHW: Fri & Sat 8 AM to 4 PM

2

## **Central Transfer & Recycling Center**

11034 NE 117th Ave 360-256-8482

Mon – Fri 6 AM to 6 PM Sat & Sun 8 AM to 4 PM

HHW: Fri - Sun 8 AM to 4 PM

3

## **Washougal Transfer Station**

4020 S Grant St 360-835-2500

Wed & Fri 7 AM to 5 PM Sat 8 AM to 4 PM

HHW: First & Third Saturdays 8 AM to 4 PM

# Household Hazardous Waste (HHW)

- Motor oil
- Antifreeze
- Other automotive liquids
- Cooking oil
- Paint
- Paint thinners
- Stains
- Batteries- household and automotive
- Pesticides
- Cleaning products
- Fire extinguishers
- Fluorescent bulbs, compact FLS



# HHW- Preparation and Transport

## Preparation

- Secure lid
- Labeled if required
- One type of liquid per container
- Identify any materials with poor labels

## Transportation

- Placing materials in lidded container is best
- Make sure box contents and box are secure
- Good ventilation for any off-gassing items
- In trunk or truck bed, as far from driver as possible

## No

- Leaking containers
- Amounts greater than 25 gallons/ 220 pounds
- Asbestos
- Explosives/ ammunition
- Radioactive material
- Infectious waste
- No mixing liquids

# HHW- Preparation and Transport





# HHW- Preparation and Transport



# Household Hazardous Waste (HHW)

## Drop off at transfer station anytime:

- Extra Mixed Recycling
- Scrap Metal
- Used Motor Oil & Antifreeze
- E-Cycle Wa Electronics
- Sharps
- Vehicle batteries
- Fluorescent bulbs
- Propane tanks
- Cooking oil
- Shredded paper





# Household Hazardous Waste (HHW)

**Drop off at transfer station, on HHW days:**

- Paint
- Pesticides
- Chemicals – household, lawn & garden, automotive
- Uncontrolled medications
- Household batteries (tape ends)
- Used oil

**LIMIT: 25 gal. or 200 lbs.**



# Transfer Stations- HHW Hours



1

## **West Vancouver Materials Recovery Center**

HHW: Fri & Sat 8am- 4pm

2

## **Central Transfer and Recycling**

HHW: Fri, Sat & Sun 8am- 4pm

3

## **Washougal Transfer Station**

HHW: First and third Saturdays  
8am- 4pm

# HHW- Cleaning products/ chemicals

- Bleach (liquid left in bottle)
- Ammonia
- Pesticides
- Insecticides
- Rodenticides
- Photography chemicals
- Solvents
- Windshield wiper fluid
- Herbicides
- Household cleaners
- Fungicides
- Gasoline



## **\*\*Safety Reminder\*\***

- Please handle chemicals safely
- Use gloves if necessary
- Transport chemicals in lidded containers
- Do not mix chemicals/ liquids

# HHW- Fluorescent bulbs

- Up to 10 bulbs a day
- Tubes (up to 8ft in length) or curved
- Compact Fluorescent Lights (CFLs)
- High Intensity Discharge Lights (HID)



# HHW- Fluorescent bulbs

## Drop off locations:

- **Transfer stations**
- **Clark Public Utilities**
  - Orchards & Vancouver locations
  - Receive LEDs in return!
- **Ace Hardware**
- **Globe Lighting**
- **Home Depot**
  - Most locations, call ahead
- **Lowes**
  - Most locations, call ahead
- **Total Reclaim & EcoLights**

Central Transfer



# HHW - Batteries

- Alkaline and rechargeable batteries in common sizes: AA, AAA, button cell, 9 volt, C, D
- Store separately to prevent corrosion and fires
- Tape ends of spent batteries
- Put on lid of recycling cart in clear zipped bag
- Drop off at transfer stations during HHW hours





# HHW - Batteries

## Lithium Ion

- Found in laptops, cell phones, cameras, portable chargers, tablets, etc.
- **Explosive when damaged**
  - Battery fire at a MRF video:  
<https://youtu.be/xFex6k4ZZMM>
- Do not remove batteries from devices if they're not made to be removed
- Do not put batteries in curbside garbage or recycling
- Free drop-off at all Home Depot and Lowes locations, and Transfer Stations during HHW hours



# HHW- Automotive

## Motor Oil

- Can be in original container
- No other liquids mixed in

West Van



## Motor Oil & Automotive Battery Drop off locations:

- **O'Reilly Auto Parts**
  - Most locations, call first
- **AutoZone**
  - Most locations, call first
- **Impact Automotive**
- **Advanced Auto Parts**

Central Transfer



# HHW- Paint

**Is the paint, stain or adhesive still usable?**

**Yes, donate it to:**

- **Clark County Habitat for Humanity**

**No, take to any Transfer Station or:**

- **Ace Hardware**
  - Battle Ground or Salmon Creek
- **Miller Paint Store**
  - Most locations
- **Parkrose Hardware**
  - Most locations
- **Rodda Paint & Décor**
- **Clark County Habitat for Humanity**



# HHW- Paint

## Drop off rules for store locations:

### Yes

- Latex paint
- Oil-based paint
- Lacquer
- Enamel
- Stain
- Shellac
- Varnish
- Thinners

### No

- Adhesives and glues
- Waxes and polishes
- Putty/filler: wood, auto, etc
- Tars
- Driveway sealant
- Used motor oil, gasoline, or antifreeze
- Other hazardous wastes (cleaners, foams, chemicals)

# HHW- Paint

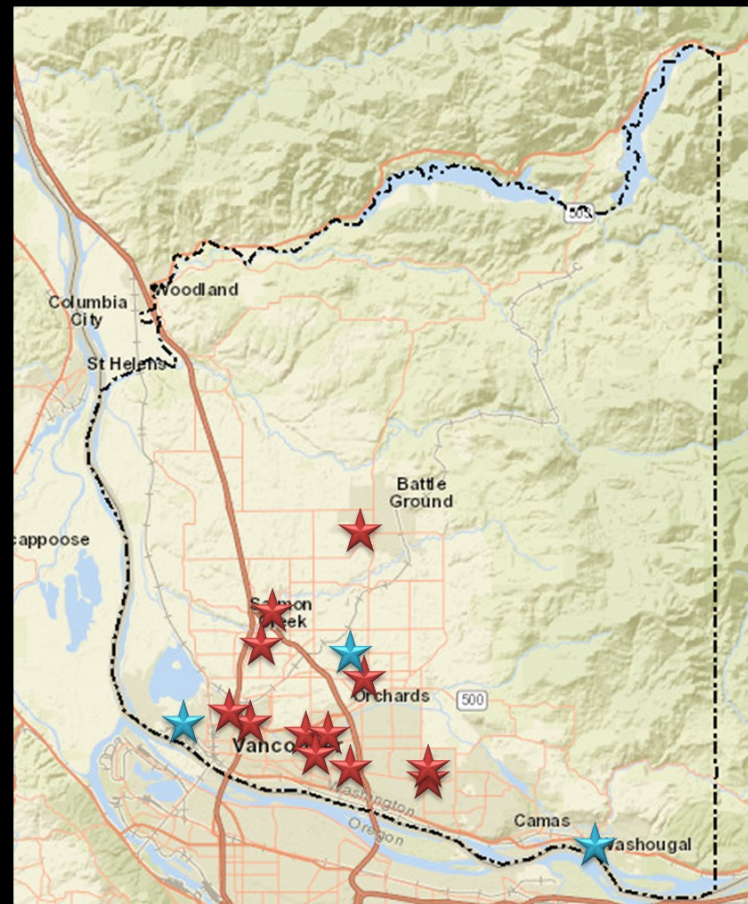
- ✓ No leaking containers
- ✓ No missing or loose lids
- ✓ No dried or solid paint
- ✓ No empty cans (recycle metal or toss plastic)
- ✓ No severely rusted / compromised cans



Participating store



Transfer station



# Medical Waste

- Needles/ Sharps/ Syringes
- Medications- controlled & uncontrolled
- Oxygen tanks & tubing
- Wheelchairs
- Walkers
- Crutches





# Medical Equipment - Reuse

- Wheelchairs
- Crutches
- Walkers
- Canes

## Donate at:

- **Goodwill Industries(1-6)**
- **A Caring Closet (7)**



You may drop off this item for reuse. **CALL BEFORE YOU DRIVE!**

# Medical Waste – Medications

## Battle Ground Police

\*Accepts liquids

## Peacehealth Southwest (1)

\*Accepts liquids

\*Meds in original packaging  
ONLY

\*No controlled medications

## Ridgefield Police

\*No pill containers

\*Accepts sharps

## Camas Police

## Vancouver Police West

\*No pill containers

## Vancouver Police East

\*No pill containers

## Walgreens- Salmon Creek

\*Call for availability

## Walgreens- Fisher's Landing (2)

\*Call for availability

## Skamania County Sheriff's Office

\*Prescription liquids only



\*Medications do not need to be in original packaging, no liquids, sharps or inhalers unless specifically stated otherwise\*

# Medical Waste - Sharps

- Hypodermic needles
- Syringes
- Scalpel blades
- Lancets
- Intravenous (IV) tubing with attached needles



Must be in puncture proof container with a lid.  
If not in approved container (i.e. the downy bottle) must label it as “SHARPS”.

# Medical Waste - Sharps



## Central Transfer & Recycling Center

- \*Accepts sharps, drop off any time
- \*Accepts medications & inhalers

**Fri-Sun 8am-4pm**



## West Van Materials Recovery Center

- \*Accepts sharps, drop off any time
- \*Accepts medications & inhalers

**Sat 8am-4pm**



## Washougal Transfer Station

- \*Accepts medications & inhalers, 1<sup>st</sup> and 3<sup>rd</sup> Sat of month 8am-4pm
- \*Accepts sharps, Wed & Fri 7am-5pm, Sat 8am-4pm



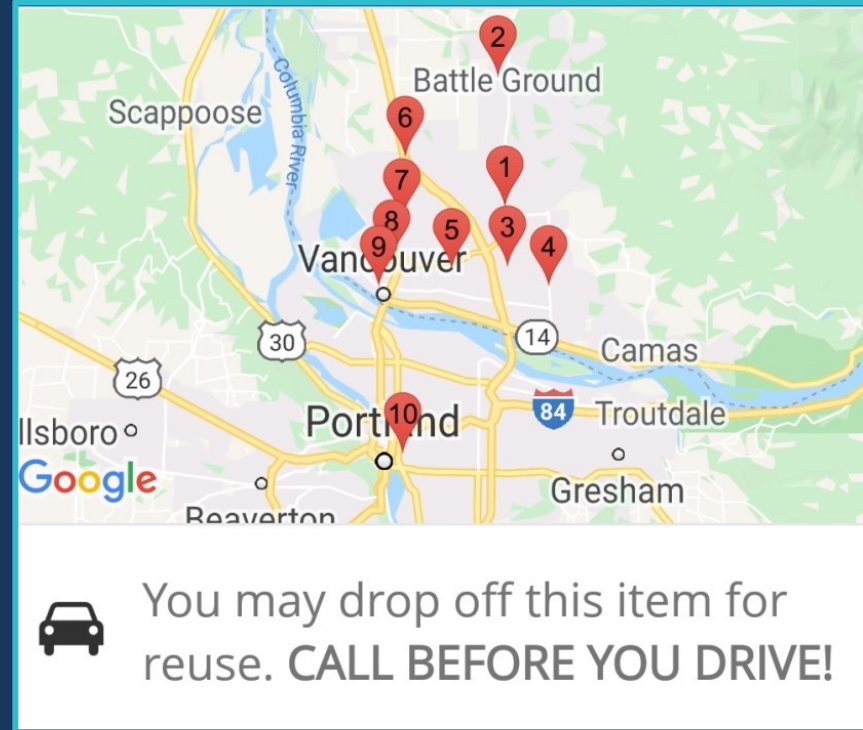
# Electronics

- Printers
- Computers & Monitors
- TVs
- Laptops
- Keyboard & mouse
- Gaming stations
- Cell phones
- Tablets
- E-Readers
- Portable DVD players
- Portable gaming devices



# Electronics - Reuse

- **Goodwill Industries(1,2,4,6-8)**
- **Cascadia Tech Academy - IT Program (3)**
- **ReTails Thrift Store (5)**
- **Open House Industries (9)**
- **Free Geek (10)**





# Electronics - Transfer stations

- Computers
- Monitors
- TVs
- Portable DVD players
- Tablet
- E-Reader
- Laptops

West Van



Central Transfer



Above items are a part of the Washington E-Cycles program and have designated drop off areas

# Electronics - Other

- Cell phones
  - Cords
  - Keyboards
  - Mice
  - Gaming systems
  - Printers
  - Toner cartridges
- 

## Best Buy

- Any location, call ahead

## Staples

- Any location, call ahead

## Office Depots

- Any location, call ahead

## Radio Shacks

- Any location, call ahead

## EH Metal Recycling

## Earth Friendly Recycling

**These items are garbage if taken to the transfer stations.**

# Block Foam

- Clean & Dry
- White Block Foam
- Free to residents and businesses!
- Available at all 3 transfer stations!



# Block Foam

## Block White Foam

Drop off any time at transfer stations

## Not accepted at Transfer Stations:

- Styrofoam meat trays/ egg cartons
- Styrofoam peanuts
- Clamshells
- To-go containers
- Food soiled

Yes



No



# Block Foam

## Central Transfer and Recycling

- Goes to **Earth Friendly Recycling**



## West Van

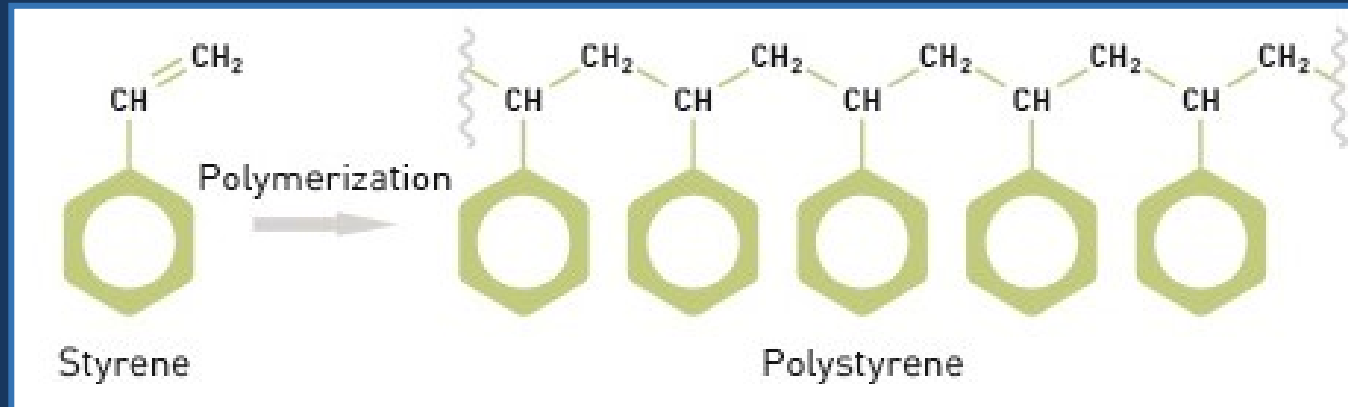
- Goes to **Agilyx**



# Block Foam

## What happens to the foam?

- Polystyrene (polymer) converted back to styrene (monomer)
- Styrene can now be used for creating more polystyrene





# Block Foam



# Block Foam

## Agilyx Drop-off

- 13240 SW Wall St. Tigard, OR 97223
- Accepts ANY number 6 plastic!



# Appliances

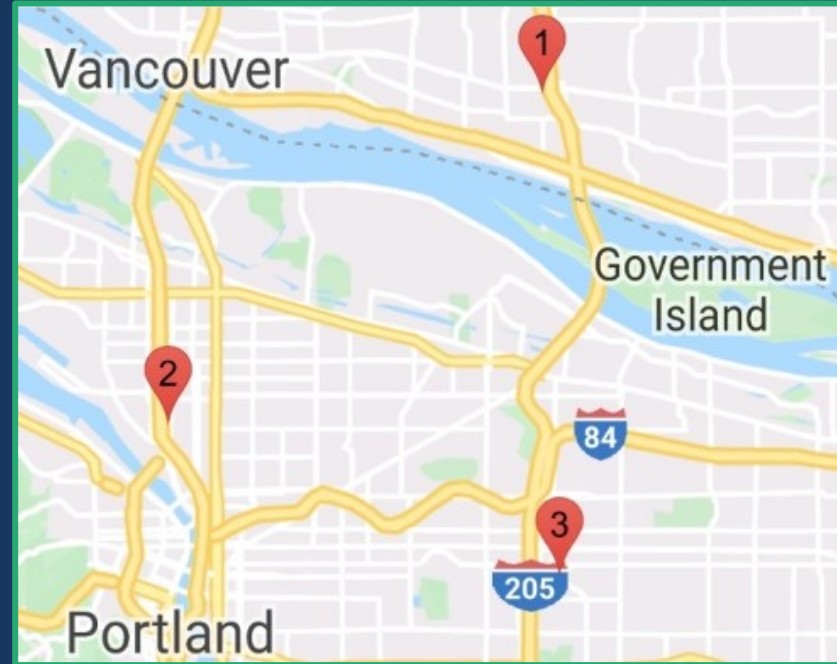
- Refrigerators\*
- A/C Units\*
- Freezers\*
- Washers
- Dryers
- Stoves
- Dishwashers

\*contains Freon



# Appliances - Reuse

- **Clark County Habitat for Humanity (1)**
- **Rebuilding Center (2)**
- **Habitat for Humanity Restore (3)**



# Appliances - Other

**\*All regular and Freon containing appliances can be taken to any transfer station**

## Drop off:

- **Earth Friendly Recycling**
- **Five Corners Appliance Co.**
- **Pacific Coast Shredding**
- **Green Century Electronics Recycling**

**\*\*City of Vancouver Residents\*\***

1 free appliance pick up at curb if in a single family home.

**\*\*Greater Clark County\*\***

These materials can be picked up curbside but for a fee (this also applies to COV residents who have used up their one free pick up)

# Bulky Items

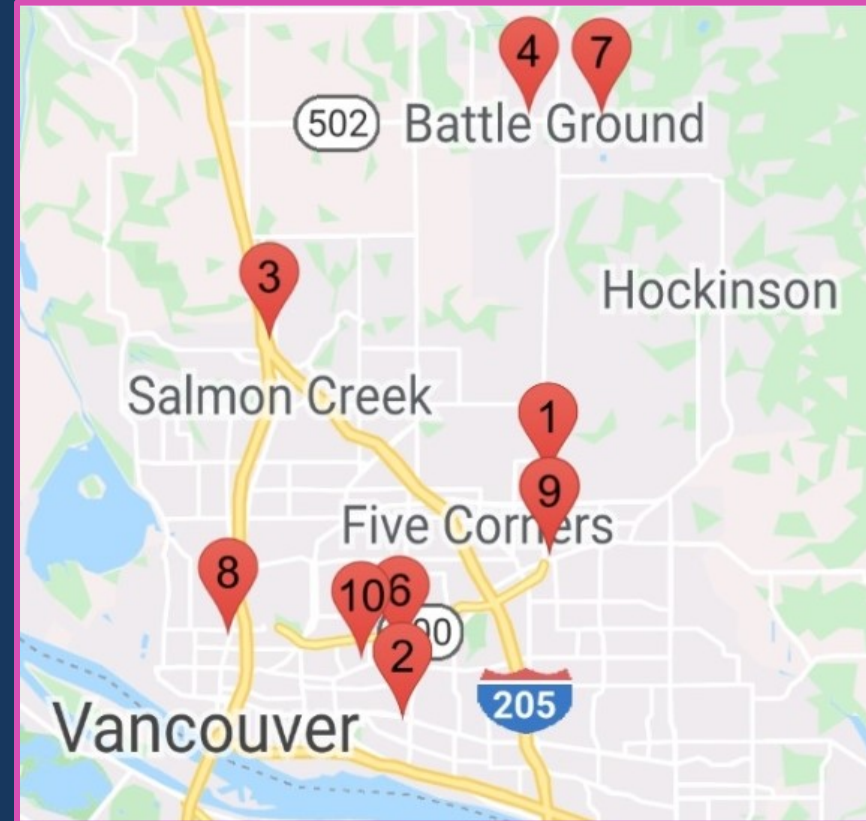
- Bookcases
- Tables
- Chairs
- Couches/ Sofas/ Loveseats
- Mattresses/ box springs
- Dresser/ drawers





# Bulky Items - Reuse

- **Goodwill Industries (1,3,4,6)**
- **Nifty and Thrifty (2)**
- **Kidz Cloz (7)**
- **Lutheran Community Services (8)**
- **Treasure Trove Consignment Shop (9)**
- **ReTails Thrift Store (10)**





# Bulky Items - Other

- All bulky items can be disposed of as garbage at transfer stations, garbage rates apply
- Bulky Items can be picked up curbside through pre-arrangement and additional fee
- If you live in an apartment complex, contact your property manager if you have any bulky items to dispose of

# Plastic bags

Plastic bags/ film can be taken to any **Transfer Station**  
**OR**  
to a grocery store near you

## Fred Meyers

All locations

Drop off receptacles in entry way to store, by the carts

## Safeway

All locations

Drop off receptacles in entry way to store, by the carts

## Winco

Drop off receptacles in entry way to store, by the carts



# Plastic Film

Yes



**Grocery  
Bags**



**Produce  
Bags**



**Case  
Overwrap**



**Bubble  
Wrap**



**Air  
Pillows**



**Plastic Shipping  
Envelopes**



**Newspaper  
Bags**



**Product  
Overwrap**

# Plastic Film

# And..



**Food Storage  
Bags**



**Bread  
Bags**



**Cereal Box  
Liners**



**Electronic Film  
Packaging**



**Dry Cleaning  
Bags**



**Salt  
Bags**



**Pellet  
Bags**



**Ice  
Bags**

# Plastic Film

# NO



**Frozen Food  
Bags**



**Pet Food  
Bags**



**Candy Bar**



**Plastic  
Pouches**



**Six-Pack  
Rings**



**Degradable  
Bags**



**Chip  
Bags**



**Cheese Bags  
and Wraps**

# What happens to my film?

5

TREX



6

Final product



# Shredding

## Transfer station drop off:

### Paper to-be shredded:

- \$8.00/ 15" x 12" x 10" banker box
- \$16.00/ 24" x 12" x 10" banker box

### Pre-shredded paper:

- Free drop off at any transfer station

**Friendly Reminder: Shredded paper does not go in the blue recycle cart**

## *Le May Mobile Shredding*

**Saturday, April 18, 2020 10AM – 1PM**

**Strand Insurance**

209 W Main

Long Beach, WA 98631

**Saturday, May 16, 2020 10AM – 1PM**

**Beautiful Savior Lutheran**

12513 SE Mill Plain Blvd

Vancouver, WA 98683



# Shredding- Reuse

## Reuse Shredded paper:

- Worm bins
- Composting
- Packing material
- Shipping material
- Gift baskets
- Kindling



# Product Stewardship/ Extended Producer Responsibility (EPR)

*Shifts the burden and responsibility of managing end of life processes of materials onto the producer or manufacturer.*

Current product stewardship laws & EPR resolutions in WA state & nationally:

- Electronics “E-Cycle WA” (2009)
- Carton Council (2009)
- CFLs & Fluorescent - LightRecycle (2013)
- Solar Panel Recycling (2021)
- Pharmaceuticals (2018)
- Paint Stewardship (2019)
- Human Composting (2019)

# Managing Event Waste

## Hosting & Attending

- Community
- Office
- Home
- Camping





# Event Planning

## How will I serve

Choose durable plates, refreshments to my

## guests?

- Fresh produce/bulk bins

## How will I get waste

decorations

## & durables back from my guests?

- Label garbage, recycle, compost bins



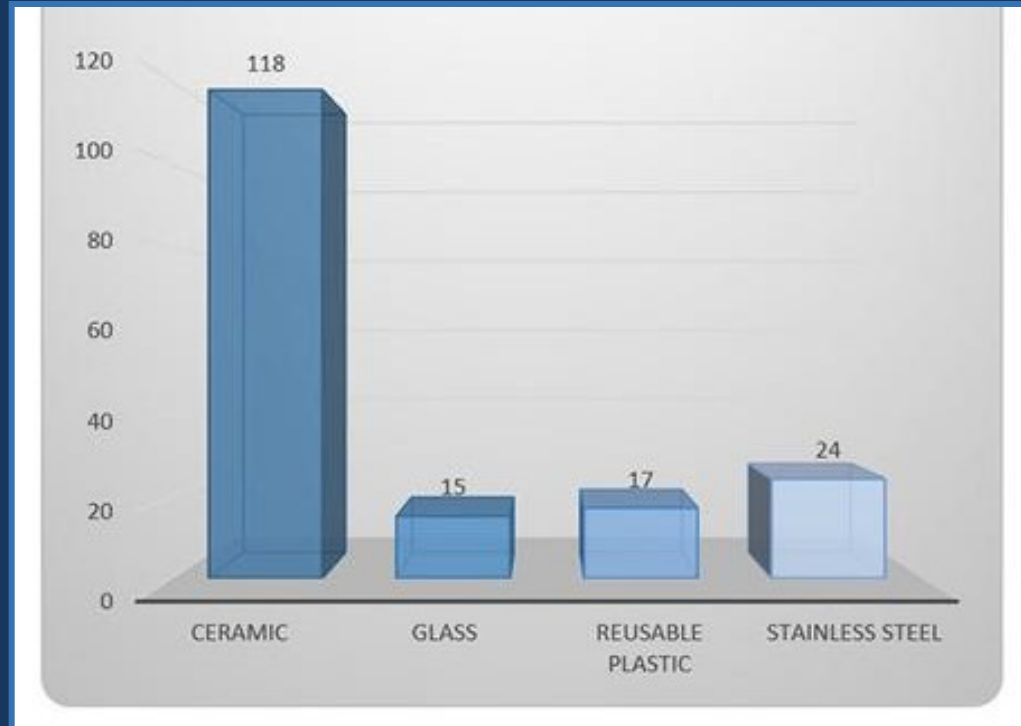
# Durable Dishware

## Reusable plastic dishes need to be reused:

- 10 times to be more sustainable than single use plastic
- 14 times to be more sustainable than bags
- 17 times to be more sustainable than paper [3,4,10]



Number of uses needed to be more sustainable than single-use paper.



# Tips for Attending Events

## Bring your own...

- Water bottle
- Mug
- Shopping bags
- Straw
- Silverware
- Cloth napkins

## Pack it out if needed

## Give feedback

- Suggestions
- Encouragement

## Potluck?

- Contribute dishes/ compost pail



# Event Library

[wcnorthwest.com/specialevents](http://wcnorthwest.com/specialevents)

## Rent:

- Clearstreams
- Bags
- Signs
- Compost pail
- Tent
- Sandwich board
- Dishware

FREE!





WASTE CONNECTIONS, INC.  
WASHINGTON - CLARK COUNTY

HOME   ANNOUNCEMENTS   SERVICES   VALUES   FAQs   RELATED LINKS   EMPLOYMENT

## Special Events Resources



Tips for hosting a zero-waste luncheon



Event Equipment Reservation Form



Equipment List



Event Planning Guide

Quick

Announ

Services

Frequen

Borrow

Donation

We Pr

PA of F

DeWils A

Septe

Clark County

Come see

Home & C

HOME &



# Learning Objectives

1. List items that can be taken to the transfer stations for recycling
2. Identify materials that need to go to Household Hazardous Waste at the transfer station
3. Explain how to prepare (potentially) hazardous materials for transport
4. Apply learnings to your life: What is one thing you might do differently or share with someone else



# Questions?

Waste Connections

360-892-5370

[recyclehelp@wasteconnections.com](mailto:recyclehelp@wasteconnections.com)

City of Vancouver Solid Waste

360-487-7160

[solidwaste@cityofvancouver.us](mailto:solidwaste@cityofvancouver.us)

